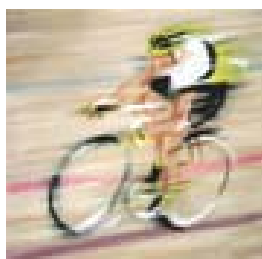


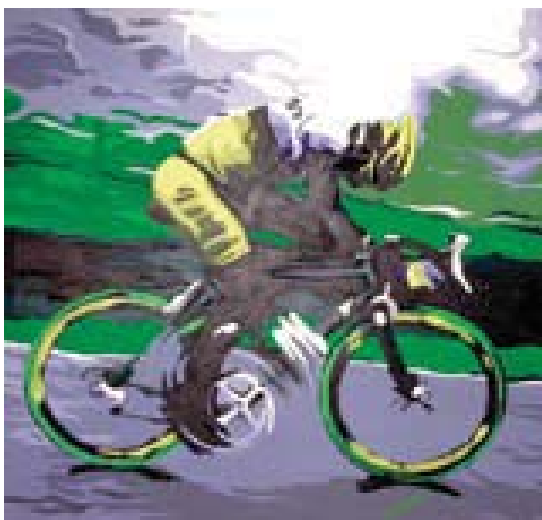
STEVE DENNIS



Chris at Herne Hill
2003
Acrylic
24"x24"



Levi Leipheimer
2006
Acrylic on wood
24"x24"



Keith at Goodwood
2004
Acrylic on canvas
24"x24"



Wesseman
2007
Acrylic
28"x22"



Jalabert
2005
Acrylic
28"x48"

I spent my youth cycling the green mountains of Wales. Having married a beautiful American, I now find myself riding in the concrete jungle.

One particularly dismal winter in the UK led to the first of many hours painting what I was unable to be out there doing. That's how it started.

From paintings of teammates forging alone in a break to pro's in their moment of glory and reflection, I paint moments that appeal to me — that capture some spirit, emotion, and passion of cycle sport.